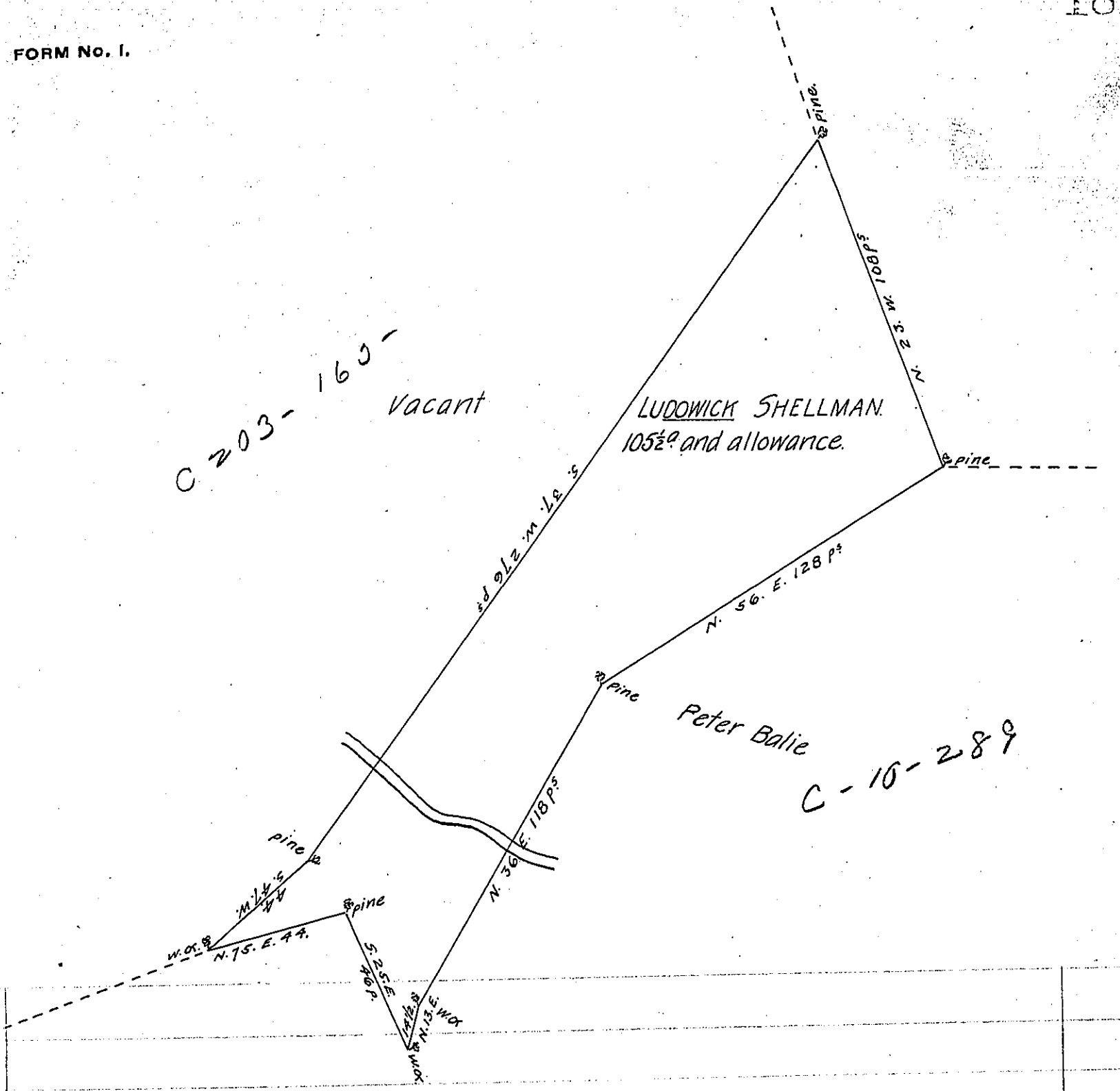


FORM No. 1.



Beaver Spring, Surveyed to Ludwig Shellman on the 6th Day of September
 1773. Containing one Hundred five Acres and one half, and the allowance of Six $\frac{1}{2}$ Ct.
 Situate in Upper Paxtang Township, Lancaster County, by Warrant of the 18th August 1773.

J. Bartrem Galbraith

To John Lukens, Esq^r }
 Surveyor General.

D.S.

IN TESTIMONY that the above is a copy of the original remaining on file in
 the Department of Internal Affairs of Pennsylvania, made
 conformably to an Act of Assembly approved the 16th day of
 February, 1833, I have hereunto set my Hand and caused
 the Seal of said Department to be affixed at Harrisburg,
 this twenty-second day of October 1906.

James P. ...
 Secretary of Internal Affairs.